

COVID-19 (Coronavirus) Update 12

East Kimberley College Families & Staff

05 June, 2020



Schools are safe and open for learning

All students are expected to attend school, except for those students medically referred to learn from home.



Parents/Carers and Visitors

We welcome our parents and/or carers back onto school grounds for morning drop off and afternoon pick up. Students and staff have missed this regular contact so it will be great to have this opportunity again. Parents/carers and visitors can now access the front office for services and there is more access available for third party providers.



Cleaning and Hygiene

The College has increased the frequency of cleaning all high usage areas on school grounds. Playground equipment is regularly cleaned.

Gatherings

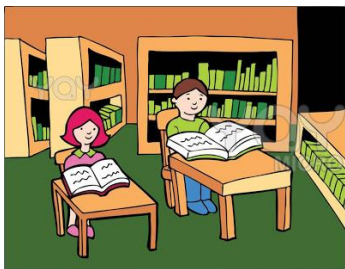
Inside gatherings of up to 100 people and outside gatherings of up to 300 people are now permitted in schools. Secondary weekly Homeroom Year Meetings will resume along with Friday Clontarf and Girls Academy Homeroom sessions. Primary assemblies will continue to be delivered on-line until further notice and our next assembly will be in Week 8.

Sports

Contact sports can now resume and care will be taken to ensure equipment is cleaned. Interschool sport and carnivals can also resume ensuring the 100 people inside and 300 people outside restrictions are in place. The College is currently exploring Athletics events which will align with the latest Health advice.

Excursions/Incursions/Camps

Schools can resume excursions and incursions with the same 100 inside and 300 outside restrictions on numbers. Schools will also undertake an assessment of facilities, accommodation and activities to ensure safety and adherence to social distancing measures are maintained. Camps can recommence with numbers required to be capped at 100 people in total.



School Community Library

Classes and students are able to access the Library again and Library staff will be ensuring number restrictions and hygiene practices are in place.

Work Place Learning (WPL) and Work Experience

Work Place Learning can recommence. The College is currently planning the next block and will advise students and parents of any upcoming WPL blocks. Schools must confirm employers will provide a COVID-19 safe work environment, consistent with Health guidelines.

Exams

Exams may proceed for up to 100 people. Week 7 Semester 1 Exams for Year's 10-12 will be in the Performing Arts Centre.

KindiLink

We are seeking advice in relation to resuming the KindiLink Program.

If you have any questions in regard to these notifications, please do not hesitate to call the College on 9168 4400 to discuss.

